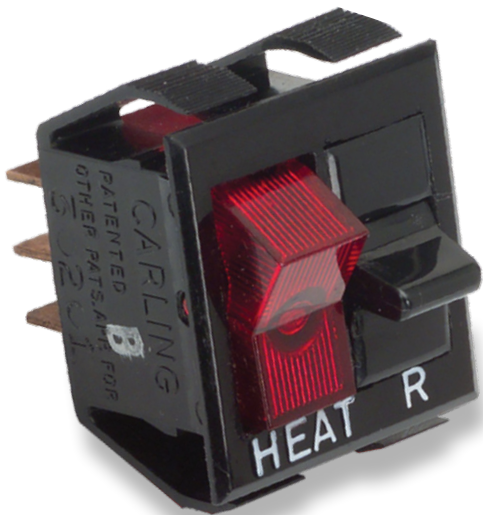
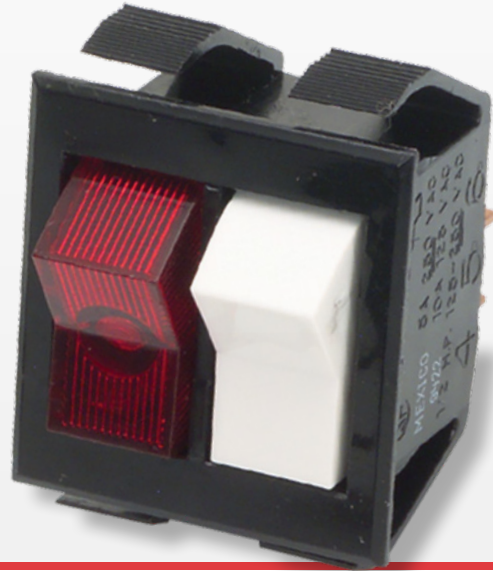


TTG-Series

Rocker Switches

PRODUCT WEBPAGE

request sample, configure part



The TTG-Series Mid-Sized Tippet snap-in rocker switches consist of two single pole illuminated or non-illuminated switches in a common base. Each pole can have the same or different switch function. These switches are AC rated up to 15 amps and are also suitable for low-voltage DC applications, in a wide range of markets.

2
Poles

5-15
Amps

125-250
VAC

6-28
VDC

Typical Applications

- Appliances
- Transportation
- Medical
- HVAC
- Commercial Food

Tech Specs

Dielectric Strength

UL/CSA: 1000V - live to dead metal parts

Electrical Life

50,000 cycles - maintained
25,000 cycles - momentary

Operating Temperature

32°F to 185°F (0°C to 85°C)

Ordering Scheme

	Base Only			Switch 1										
Sample Part Number	TTG	T	-	TA	20	1	-	T	B	-	B	/		
Selection	1	2	3	4	5	6	7	8						
							Switch 2							
					LTA	20	1	P	B	-	B	R	/	125N
					3	4	5	6	7	8	9			10

1. SERIES

TTG Two Single Pole switches in one base

2. CIRCUIT

See next page for diagram

Available with circuits A, B, C, D, E, F, L, T, U

3. BASIC SWITCH NUMBER

TA On-None-Off **TC** On-Off-On
TB On-None-On **LTA** On-None-Off, Lighted

4. RATING

10 5A 250VAC, 10A 125VAC, 1/2HP 125-250VAC
20 10A 250VAC, 15A 125VAC, 3/4HP 125-250VAC
21 10A 250VAC, 15A 125VAC

5. TERMINATION / FUNCTION

	Solder Lug	.250 Tab QC	.187 Tab QC	Wire Leads
On-None-Off	0	1	3	5
(On)-None-Off	A	B	D	F
On-None-(Off)	L	M	R	T
On-None-On	0	1	3	5
On-None-(On)	A	B	D	F
On-Off-On	0	1	3	5

6. ACTUATOR STYLE

P Paddle
T Rocker
PS Short Paddle

7. ACTUATOR COLOR

unlighted ¹	lighted ²
B Black	A Amber
W White	C Clear
	G Green
	LU Blue
	R Red

8. BASE COLOR

¹

B Black **W** White

9. LENS COLOR

³

A Amber	G Green	R Red
C Clear	LU Blue	W White

10. LAMP VOLTAGE

incandescent	neon
6V 6 volt	125N 125 volt neon
12V 12 volt	250N 250 volt neon
18V 18 volt	
24V 24 volt	
28V 28 volt	

Notes: Imprinting is available. Consult factory. Panel Cut-Out Recommendations: For sheet metal panels, switch must enter panel in same direction as the punch. (Burr on bottom.) Test cut hole in actual material.

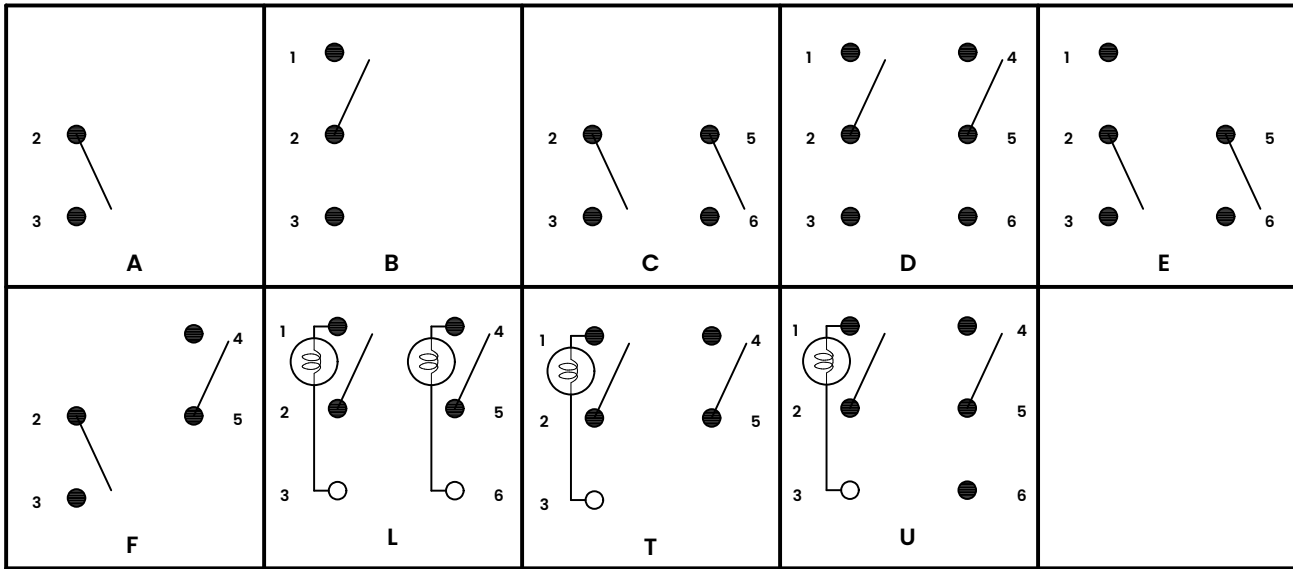
- ¹ Custom colors are available. Consult factory.
- ² Specify lens color for LTA with rocker only.
- ³ Specify lens color for LTA with paddle actuators only.
- () Indicates momentary function.

[Configure Complete Part Number >](#)

[Browse Standard Parts >](#)

Ordering Scheme Diagram

2. CIRCUIT



Dimensional Specs

inches [millimeters]

