

R135-Series

ROTARY SWITCHES

The R135 and R135A-Series rotary switches are single pole, single throw “L” rated up to 3A, feature an ON-OFF repeating action, and are available with a nylon actuating knob; nylon snap-in bracket or nickel-plated brass bushing. These switches are typically used to control lighting functions.



Product Highlights:

- 3A 125VAC “L” rating to control lighting
- Off-On repeating action circuitry
- Integrated wire lead termination
- Bushing or snap in mounting styles

Typical Applications:

- Appliance
- HVAC



Dielectric Strength

UL/CSA: 1000V - live to dead metal parts

Electrical Life

100,000 cycles

Operating Temperature

32°F to 185°F (0°C to 85°C)

R135-A - BL

¹
Base Part Number

²
Knob Color

1 BASE PART NUMBER: SERIES / CIRCUITRY / RATING / TERMINATION

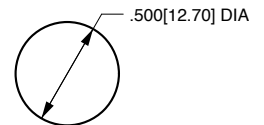
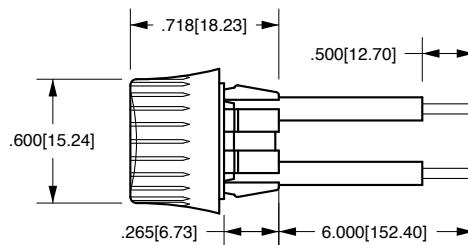
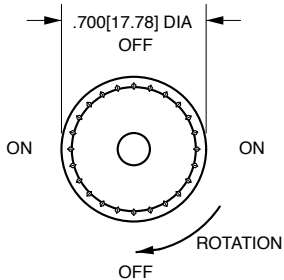
1.5A 250 VAC; 3A 125 VAC L; 5A 12 VDC	Wire Leads
OFF-ON repeating	.375 threaded bushing
OFF-ON repeating	nylon snap-in bezel
	R135
	R135-A

2 KNOB COLOR ¹

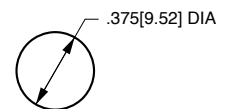
BL	Black
WH	White

Notes:
Standard Wire Leads are 6" long, stripped 1/2" black. If different length required, please specify at the end of the part number. ex. R135-A-BL/20". Panel Cut-Out Recommendations: For sheet metal panels, switch must enter panel in same direction as the punch. Burr on bottom. Test cut hole in actual material.

¹ Custom colors available. Consult factory.



NYLON BEZEL MOUNTING HOLE
Snaps into .500 [12.70] Dia. hole
Panel Thickness: .020 [508] to .078 [1.98]



THREADED BUSHING MOUNTING HOLE
Fits into .375 [9.52] Dia. hole
Bushing Length: .312 [7.92]

*Manufacturer reserves the right to change product specification without prior notice.

Authorized Sales Representatives and Distributors

Click on a region of the map below to find your local representatives and distributors or visit www.carlingtech.com/findarep.



About Carling

Founded in 1920, Carling Technologies is a leading manufacturer of electrical and electronic switches and assemblies, circuit breakers, electronic controls, power distribution units, and multiplexed power distribution systems. With four ISO registered manufacturing facilities and technical sales offices worldwide, Carling Technologies Sales, Service and Engineering teams do much more than manufacture electrical components, they engineer powerful solutions! To learn more about Carling please visit www.carlingtech.com/company-profile.

To view all of Carling's environmental, quality, health & safety certifications please visit www.carlingtech.com/environmental-certifications

Worldwide Headquarters

Carling Technologies, Inc.
60 Johnson Avenue, Plainville, CT 06062
Phone: 860.793.9281 **Fax:** 860.793.9231
Email: sales@carlingtech.com

Northern Region Sales Office: nrsm@carlingtech.com
Southeast Region Sales Office: sersm@carlingtech.com
Midwest Region Sales Office: mrrsm@carlingtech.com
West Region Sales Office: wrsm@carlingtech.com
Latin America Sales Office: larsm@carlingtech.com

Asia-Pacific Headquarters

Carling Technologies, Asia-Pacific Ltd.,
Suite 1607, 16/F Tower 2, The Gateway,
Harbour City, 25 Canton Road,
Tsimshatsui, Kowloon, Hong Kong
Phone: Int + 852-2737-2277 **Fax:** Int + 852-2736-9332
Email: sales@carlingtech.com.hk

Shenzhen, China: shenzhen@carlingtech.com
Shanghai, China: shanghai@carlingtech.com
Pune, India: india@carlingtech.com
Kaohsiung, Taiwan: taiwan@carlingtech.com
Yokohama, Japan: japan@carlingtech.com

Europe | Middle East | Africa Headquarters

Carling Technologies LTD
4 Airport Business Park, Exeter Airport,
Clyst Honiton, Exeter, Devon, EX5 2UL, UK
Phone: Int + 44 1392.364422 **Fax:** Int + 44 1392.364477
Email: ltd.sales@carlingtech.com

Germany: gmbh@carlingtech.com
France: sas@carlingtech.com



Carling Technologies®

Innovative Designs. Powerful Solutions.