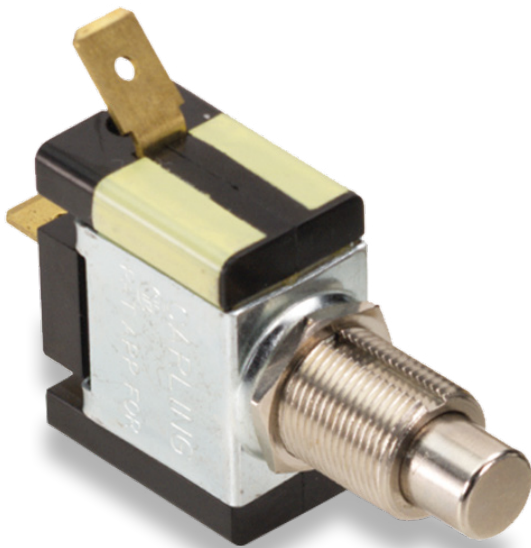


# P-Series

Pushbutton Switches

[PRODUCT WEBPAGE](#)

*request sample, configure part*



These rugged pushbutton-type switches feature international approvals, ratings to 20A 125VAC and a heavy actuation force (3-5 lbs. typical) which makes this switch ideal for use as a “foot-pedal” switch. The metal bushing and plunger construction enables this alternate action switch to withstand the rigors of most any stringent pushbutton application.

---

<b>1</b>	<b>10-20</b>	<b>125-250</b>
Pole	Amps	VAC

## Typical Applications

- Vacuum Cleaners

# Tech Specs

## Dielectric Strength

UL/CSA: 1000 - live to deadmetal parts & opposite polarity  
 TUV: 4000V - live to dead metal parts;  
 1250V - opposite polarity across open contacts

## Electrical Life

50,000 cycles

## Operating Temperature

32°F to 185°F (0°C to 85°C)

# Ordering Scheme

Sample Part Number

**PA341**

Selection

1

### 1. SERIES

	.250 Tab	Screw Terms.	Wire Leads
<b>10A 250VAC, 15A 125VAC, 3/4 HP 120-240 VAC</b> <sup>1</sup>			
On-Off	PA341	PA344	PA345
On-On	PB341	PB344	PB345
<b>10A 250VAC, 20A 125VAC, 1 1/2 HP 120-240 VAC</b> <sup>1</sup>			
On-Off	PA301	PA304	PA305
On-On	PB301	PB304	PB305
<b>10A 250VAC, 15A 125VAC, 10(6)α 250 VACu, T85</b> <sup>2</sup>			
On-Off	PA951	PA954	PA955

Notes:

1 Additional ratings available. Consult factory.

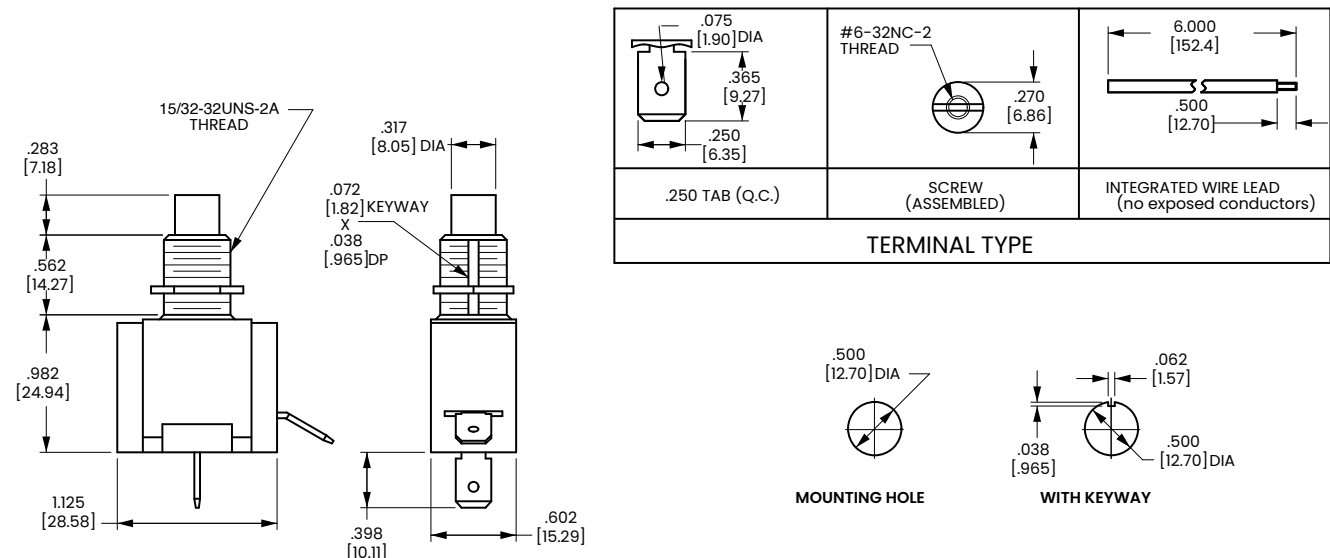
2 UL, CSA & TUV approved.

[Configure Complete Part Number >](#)

[Browse Standard Parts >](#)

# Dimensional Specs

inches [millimeters]



## Authorized Sales Representatives and Distributors

Click on a region of the map below to find your local representatives and distributors or visit [www.carlingtech.com/findarep](http://www.carlingtech.com/findarep).



## About Carling

Founded in 1920, Carling Technologies is a leading manufacturer of electrical and electronic switches and assemblies, circuit breakers, electronic controls, power distribution units, and multiplexed power distribution systems. With six ISO9001 and IATF16949 registered manufacturing facilities and technical sales offices worldwide, Carling Technologies Sales, Service and Engineering teams do much more than manufacture electrical components, they engineer powerful solutions! To learn more about Carling please visit [www.carlingtech.com/company-profile](http://www.carlingtech.com/company-profile).

To view all of Carling's environmental, quality, health & safety certifications please visit [www.carlingtech.com/environmental-certifications](http://www.carlingtech.com/environmental-certifications).