

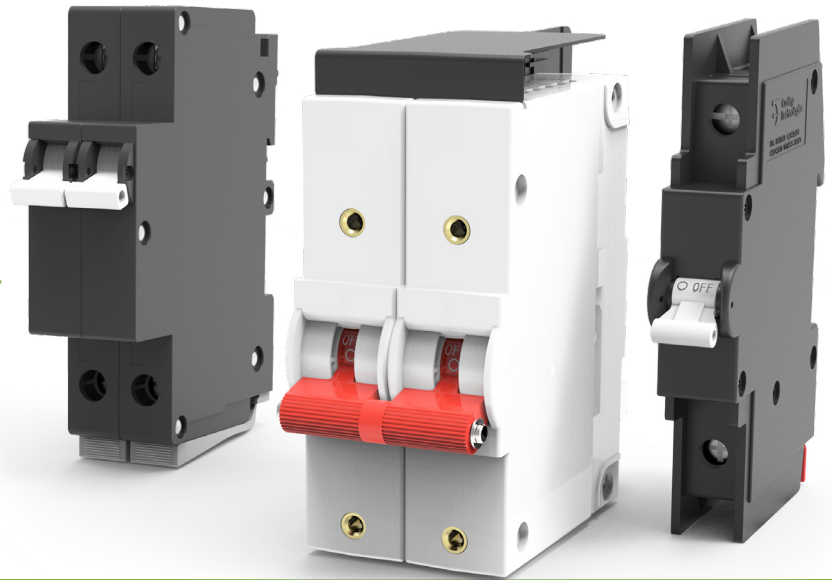


Circuit Protection

Ideal for Photovoltaic Systems,
Combiner Boxes, Inverters,
and much more.

Renewable Energy

Industry Brochure
and Selector Guide



Featured Circuit Protection Products

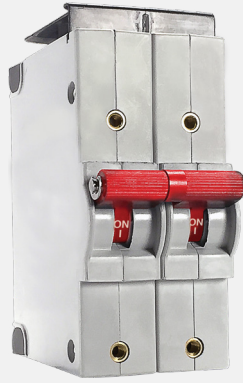


C-Series

Hydraulic-Magnetic

Compact, yet robust breaker designed for higher amperage and voltage capabilities. Ideal for integration into the combiner box.

1-6 Poles
.02 - 100A, up to 480VAC/80VDC,
up to 240VAC/125VDC for UL 489
UL 489, UL 1077, CSA, TUV, VDE
Max. Interrupting Capacity 10,000A



CX-Series

Hydraulic-Magnetic

Handles high amperage and DC voltage applications. UL 489B allows for use as a disconnect for photovoltaic systems.

1-5 Poles
0.2 - 125A (1 pole) or 115A (multipole), 600VDC
UL 489, UL 489B, UL 1077, cRUus, cULus, TUV, CCC
Max. Interrupting Capacity 10,000A



E-Series

Hydraulic-Magnetic

Handles higher current and voltage applications. Qualified for branch circuit protection or as a supplementary protector.

1-6 Poles
0.02-120A, up to 125VAC or 125VDC
UL 489, UL 1077, CSA, VDE
Max. Interrupting Capacity 10,000A

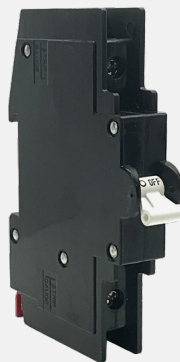


F-Series

Hydraulic-Magnetic

Safely handles high current applications. Rated at 125VDC, the F-Series is widely used as a battery disconnect for contingency power.

1-3 Poles
100 to 250A, 277VAC or 125VDC
UL 489, cULus, TUV, CCC
Max. Interrupting Capacity 50,000A

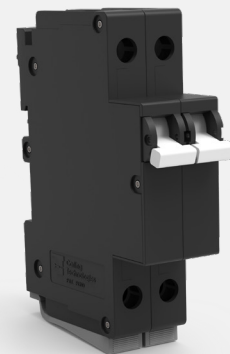


G-Series

Hydraulic-Magnetic

DIN rail mounted with unique terminal bus connection system, common linkage between poles and integrated wiping contacts.

1-4 poles (4th pole for neutral break only)
0.2 - 80A, up to 480VAC/80VDC or
1 - 50A, up to 240VAC/125VDC for UL 489
UL 489, UL 1077, cRUus, CSA, TUV, CCC;
Max. Interrupting Capacity 5,000A



R-Series

Hydraulic-Magnetic

3 mm DIN rail mount combines Protection with ease of use. Optional rail button and choice of 45 or 57 mm mounting panels.

1-4 Poles
1-63A@80VDC 70-200A@80VDC Parallel
Pole 1-30A@240VAC 1-50A@480VAC
UL 489A, UL 1077, CSA 22.2 No. 235, TUV IEC/EN
60947- 2, CCC

Selector Guide

Hydraulic-Magnetic



C-Series



CX-Series



E-Series

Poles	1-6 (handle) 1-3 (rocker/toggle)	1-5	1-6
Actuator Style	sealed metal toggle, handle, rocker	handle, 1 per pole	Handle
Available Delays	AC, DC, AC/DC: instant, ultrashort, short, medium & long AC, DC: high inrush-short, medium & long	DC: instant, ultrashort, short, medium & long	AC, DC, AC/DC: instant, short, medium & long, high inrush-short, medium & long
Max Current & Voltage Ratings	UL Listed: 0.02-250A@80VDC 0.1-100A@125VDC 0.02-70A@120VAC 0.02-20A@240VAC UL Recognized: 0.02-30A @480WYE/277VAC 2 Pole, 1Ø 3 Pole, 3Ø 0.02-50A@277VAC 0.02-100A @250VAC, 80VDC 0.02-100A@120/240VAC, 65VDC	UL Recognized 0.2-115A @ 600VDC UL Listed 0.2-15A @ 250/500VDC 0.2-50A @ 205/410VDC	UL Listed 0.02-100A @240VAC, 80VDC, 125VDC UL Recognized 0.02-100A @277VAC, 160VDC, 1 pole 0.02-100A @600VAC, 2 Pole 1Ø, 3 pole 3Ø 0.02-120A @125VDC, 1 pole
Max Interrupting Capacity	UL Listed: 50000A@80VDC, 1 pole only 10000A@120VAC 5000A@125VDC/240VAC UL Recognized: 7500A@80VDC 3000A@125/250VAC, UL only 5000A@250VAC listed construction 5000A@480WYE/277VAC with fuse backup	UL Listed and UL Recognized up to 10,000 amps	UL Listed 50000A@80VDC, 10000A@125VDC & 240VAC-5KA UL Recognized 5000A@125VDC 5000A@600VAC, without fuse backup 10000A@600VAC, with fuse backup
Auxiliary Switch Rating	10.1A@250 VAC 0.1A@125 VAC (gold contacts), 0.5A@80 VDC	20A@80VDC (GO circuit)	10.1A@250VAC 1.0A@65VDC 0.1A@80VDC
Available Circuits	series, shunt, relay, switch only, series with remote shutdown, relay & shunt trip dual coil, mid-trip with alarm switch	series trip	series, shunt, relay, switch only, series with remote shutdown
Terminal Options	10-32 stud, 1/4-20 stud, 10-32 screw with saddle clamp, 7/16 clip & push-in	10-32 or M5 screw terminals 1/4-20 or M6 threaded stud	10-32 stud, 1/4-20 stud 0-32 screw, 1/4-20 screw, box wire connector
Mounting Method	threaded inserts	threaded insert: #6-32 UNC-2B, or M3X0.5-6H B ISO (2 per pole)	rear or front panel
Agency Approvals	UL1077, CSA, VDE, TUV, UL1500, UL489, UL489A	UL489, UL1077, TUV (EN60934-2)	UL1077, CSA, VDE, UL1500, UL489

Selector Guide

Hydraulic-Magnetic



F-Series



G-Series



R-Series

Poles	1-3	1-3 (UL Listed) 1-4 (UL Recognized)	1-4
Actuator Style	handle	Handle	handle
Available Delays	AC, DC: short, medium & long	AC, DC: instantaneous, ultrashort, short, medium & long AC, DC: high inrush-short, medium & long	DC: ultrashort, short, medium, long, 50/60 Hz ultrashort, 50/60 Hz short, 50/60 Hz medium, 50/60 Hz long
Max Current & Voltage Ratings	UL489 Listed: 50-250A @125VDC 100-250A @120/240VAC 100-250A @277VAC 100-250A @208Y/120, 3ØVAC UL489A Listed 250-700A @125VDC	UL Listed: 1-50A@80VDC, 1-50A @125VDC, 1-50A @120VACa, 1-50A @120/240VAC 1-25A @240VAC UL Recognized: 0.1-63A @80VDC 0.1-63A @240VAC 0.1-63A @480YVAC	1-63A@80VDC 70-200A@80VDC Parallel Pole 1-30A@240VAC 1-50A@480VAC
Max Interrupting Capacity	50000A@125VDC 10000A@120/240, 277, 208Y/120VAC	UL Listed: 5000A@80VDC , 5000A@125VDC, 5000A@120VAC, 5000A@120/240VAC, 5000A@240VAC UL Recognized: 3000A@80VDC 3000A@240VAC 1500A@480VAC	up to 10,000 amps
Auxiliary Switch Rating	10.1A@250VAC 0.5A@65VDC 0.1A@80VDC	3A@125VAC 2A@30VDC	n/a
Available Circuits	series & switch only with or without metering shunt	series, switch only	series trip
Terminal Options	3/8-16 stud, 3/8-16 screw & box wire connector	recessed wire-ready, pressure plate type screw terminals	screw terminal M5 screw terminal with busbar & cage terminal
Mounting Method	rear or front panel	rear mounted on DIN rail	rear mounted on DIN rail
Agency Approvals	cUL,TUV, UL489, UL489A	UL1077, cUL, UV, UL489	UL 489A, UL 1077, CSA 22.2 No. 235, TUV IEC/EN 60947-2, CCC

About Carling Technologies

There are few products that Carling Technologies hasn't turned "ON" and fewer industries that haven't turned to Carling for solutions. With ISO and TS registered manufacturing facilities and technical sales offices worldwide, Carling ranks among the world's finest manufacturers of circuit breakers, switches, digital switching systems and electronic controls.



Worldwide
Operations



High Quality
Standards



Innovative
Products



Vertical
Integration



Excellent
Customer Service



On-Time
Delivery



2400+
Employees



150+
Engineers

Quality is the controlling factor in the design of our corporate structure, corporate systems, products, tooling, manufacturing process, and customer service. ISO9001:2015, ISO14001:2015, IATF16949:2016 facilities located in the United States, Mexico, Europe, China and Hong Kong.





European Headquarters

Carling Technologies LTD

4 Airport Business Park, Exeter Airport,
Clyst Honiton, Exeter, Devon, EX5 2UL, UK

Phone: Int + 44 1392.364422

Email: ltl.sales@carlingtech.com

Worldwide Headquarters

Carling Technologies Inc.

60 Johnson Avenue,
Plainville, CT 06062 USA

Phone: 860.793.9281

Email: sales@carlingtech.com

Asia-Pacific Headquarters

Carling Technologies, Asia-Pacific LTD.,

Suite 1607, 16/F Tower 2, The Gateway, Harbour City, 25
Canton Road, Tsimshatsui, Kowloon, Hong Kong

Phone: Int + 852-2737-2277

Email: sales@carlingtech.com.hk

WWW.CARLINGTECH.COM

