



Littelfuse®



Carling Technologies®
A Littelfuse® Brand

Switches and Controls

Ideal for Commercial Vehicles, Agricultural Equipment, Construction Equipment, Material Handling, and more.

On/Off-Highway

Industry Brochure
and Selector Guide



Electronic Switching & Control Modules



NEW

CM-Series

Multiplexed Switching System

Features three compartment LIN switch module for uniquely identifiable switches & rheostats with a CAN interface controller module.

- 1 Controller Module
- 3 LIN Buses
- 45 Switch Functions in One System
- Standard, Locking, and Rheostat
- Laser Etched Switches



CKP-Series

Customizable Keypad

Features laser etched legends and up to three dimmable LED function lights per button with diagnostic feedback.

- SAE J1939 CAN
- Sealing Protection
- 12/24 VDC Power Systems
- Vertical or Horizontal Mounting
- 2x2, 2x3, 2x4, 2x5, and 2x6 Configurations



VM-Series

Operator Control Module

Multiplexed product with the Contura® actuator style for open or closed cab environments.

- SAE J1939 CAN
- Sealing Protection
- 12/24 VDC Power Systems
- Customizable
- 3 Pod or 6 Pod Configurations



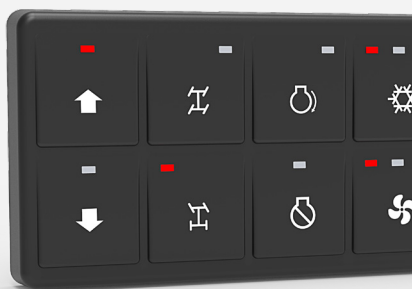
NEW

CKJ-Series

Jog Switch

Joystick rotary encoder with push-to-select button and 5 customizable function buttons with dimmable lighting.

- SAE J1939 CAN,
- Sealing Protection
- 12/24 VDC Power Systems
- Customizable
- Easy Installation



COMING SOON

UKP-Series

Universal Keypad

Laser etched legends, up to three dimmable LED function lights per button & diagnostic feedback.

- SAE J1939 CAN
- Sealing Protection
- 12/24 VDC Power Systems
- Vertical or Horizontal Mounting
- 2x2, 2x3, 2x4, 2x5, and 2x6 Configurations



NEW

CLTM12-S-Series

Solid State Load Controller

Compact with 12 high-side outputs, 4 digital inputs, 3 discrete inputs, 2 address lines and a CAN baud rate select line.

- SAE J1939 CAN
- Sealing Protection when Connected
- 6.5 to 32 VDC Voltage Input
- 75 Amp Max Current Capacity
- Molex J1 and J2 Mating Connectors

Featured Switch Products



V-Series

Contura® Sealed Rockers

Snap-in rocker switches with removable actuators in a variety of styles. Countless options for circuits, illumination & legends.

1-2 Poles
2 or 3 Positions
Sealing Protection
15/20A, 12/24VDC; 10/15A, 125/250VAC
Up to 10 Terminals



L-Series

Sealed Rockers

Actuator options include rocker, locking rocker and paddle. Lighting circuit options include independent, dependent & mixed.

1-2 Poles
2 or 3 Positions
Sealing Protection
.4-20A 12/24VDC, 125/250VAC
Up to 12 Terminals



HR-Series

Halo Illuminated Sealed Rockers

Low profile actuator with a variety dependent and independent illumination options and up to two laser-etched legends.

1-2 Poles
2 or 3 Positions
Sealing Protection
20A 12V
Up to 10 Terminals



N-Series

Sealed Addressable Rockers

Cost effective alternative to CAN/LIN based switch with up to 144 individual switch IDs by using a resistive ladder circuit.

1 Pole
2 or 3 Positions
Sealing Protection
.4A 28VDC
Built in PCB



S-Series

Bezel-less Rockers

Ergonomic rockers with abbreviated travel half throw actuation and illumination in up to three detent positions.

1-2 Poles
2 (1/2 throw) or 3 (full throw) Positions
10A 28VDC
4 Legend Orientation Choices
10 Terminal Base



BD-Series

Battery Disconnect

Minimizes battery drain, ensures maintenance personnel safety and can be used in conjunction with a padlock for theft protection.

1 Pole
Sealing Protection
100-300A, 12/24VDC
Lock Compatible
M10 or M14 Stud Terminals

Selector Guide

Electronics Switching



VM-Series



CKP-Series



CKJ-Series

Software	SAE J1939 CAN 2.0b Protocol	SAE J1939 CAN 2.0b Protocol	SAE J1939 CAN 2.0b Protocol
Switch Layout	3 or 6 individual Rockers	4 to 12 Pushbuttons	5 Pushbuttons, (1) 4-directional Joystick and 1 Rotary knob
Operating Voltage	12 or 24 V	8-32 V	8-32 V
Illumination	Dependent or Independent LED's	1, 2, or 3 LED's per load	CAN Controlled dimmable LEDs
Sealing	IP68 Front Panel; IP68 Back Panel when connected	IP69 Front Panel; IP68 Back Panel when connected	IP67 for above panel switch components
Termination	Deutsch DT-Series Connector	Deutsch DT-Series Connector	Deutsch DT-Series Connector
Legends	Custom or standard laser etched backlighting	Custom or standard laser etched backlighting	Custom or standard laser etched backlighting



CM-Series



COMING SOON

UKP-Series

Software	SAE J1939 CAN 2.0b Protocol (Controller Module) LIN Bus (Switches)	SAE J1939 CAN 2.0b Protocol
Switch Layout	Up to 3 switches	4 to 12 Pushbuttons
Operating Voltage	9-32 VDC (Controller Module) 5-32 VDC (Hardwire Switch)	8-32 V
Illumination	0, 1, 2, or 3 Independent LED's	1, 2, or 3 LED's per load
Sealing	IP52 when connected	IP67 Front and Back Panel when connected
Termination	TE connectors and terminals (see datasheet)	Deutsch DT-Series Connector
Legends	Custom or standard laser etched backlighting	Custom or standard laser etched backlighting

Selector Guide

Controls



	CLTM12-S-Series	V-Charger	LD Dimmer	LMR Mirror	LW Wiper
Poles	n/a	1	1	Multi	2
Ratings	6.5 to 32VDC	up to IP65 12V/24VDC	up to 10A 12VDC 5A 24VDC	up to 1A 14VDC .5A 28VDC	up to 8A 14VDC 4A 28VDC
Actuator	n/a	sealed spring-loaded access doors; curved or square	rocker, paddle	joystick	rocker, paddle
Mounting Hole Specifications	3x M6 studs	.830" x 1.450" [21.08mm x 36.83mm] snap-in mount	.867" x 1.734" [22mm x 44mm] snap-in mount	.867" x 1.734" [22mm x 44mm] snap-in mount	.867" x 1.734" [22mm x 44mm] snap-in mount
Termination	1/4" - 20 power studs	.250 tabs	.250 tabs	wire leads with connector	.187 tabs
Illumination	n/a	LED	LED	n/a	LED
Sealing	IP69k	Curved Doors: IP65 above-panel when doors closed Square Doors: IP64 above-panel when doors closed	IP67 above-panel	n/a	n/a

Switches | Sealed Rockers



	V-Series	L-Series	HR-Series	N-Series	W-Series
Poles	1,2	1,2	1,2	1	1,2
Ratings	IP66/68; up to 20/15A 12/24VDC 15A 125VAC 10A 250VAC	IP67; up to 15A 125VAC 10A 250VAC 20A 18VDC	IP68; 20A 12V	.4VA 28VDC	IP68 including connector; up to 10A 24VDC
Actuator	Rocker, Paddle, Locking Rocker	Rocker, Paddle, Locking Rocker	Laser-Etched Rocker	IP67, rocker, paddle	Bezel-Less Rocker, Paddle & Locking Rocker
Mounting Hole Specifications	.830" x 1.450" [21.08mm x 36.83mm] snap-in mount	.867" x 1.734" [22mm x 44mm] snap-in mount	.830" x 1.450" [21.08mm x 36.83mm] snap-in mount	.867" x 1.734" [22mm x 44mm] snap-in mount	.830" x 1.450" [21.08mm x 36.83mm] snap-in mount
Termination	.250 tabs, solder lug, wire leads	.187 tab, .250 tabs	.110 tabs	.187 tabs	.110 tabs
Illumination	incandescent, LED, neon	incandescent, LED	LED	LED	LED
Approval	UL, CSA	n/a	n/a	n/a	n/a

Selector Guide

Switches | Rocker, Rotary, Toggle



S-Series



V-Rotary



ST-Series

Poles	1,2	2	1,2
Ratings	up to 10A 28VDC	up to 15A 24VDC 20A 12VDC	10A 250VAC 15A 125VAC 16A 12/24VDC
Actuator	bezel-less rocker	IP67, ergonomic knob	IP68, bat, paddle
Mounting Hole Specifications	.787" x 1.575" snap-in, keyed	.830" x 1.450" [21.08mm x 36.83mm] snap-in mount	.500" dia [12.7mm] bushing mount
Termination	.110 Tabs	solder lug .250 tabs wire leads	.250 tabs Screw Terminals with cage clamps
Illumination	LED	incandescent, LED	n/a
Approval	n/a	pending	UL60079-15, cUL

Switches | Combination Switch, Battery Disconnects



CSW-Series



BD1-Series



BD-Series

Poles	Multi	1	1
Ratings	10-15A 12VDC	250 Amps 12VDC/24VDC	100-300 Amps 12VDC/24VDC
Actuator	Pushbutton, Rotary & Lever	ergonomic knob; removable option available	ergonomic knob
Mounting Hole Specifications	Round, Snap in Style	M6/M7 Bolt and Nut	M8 Bolt and Nut
Termination	Wire Leads or Connector	M10 Stud; 19 and 27mm length	M10 Stud M14 Stud

Custom Solutions

If you can imagine it, Carling Technologies can create it. From a minor modification to an existing product to a co-development concept, no one can develop, design and manufacture a custom engineered product with greater ease, more efficiency, or more cost effectively than Carling Technologies.

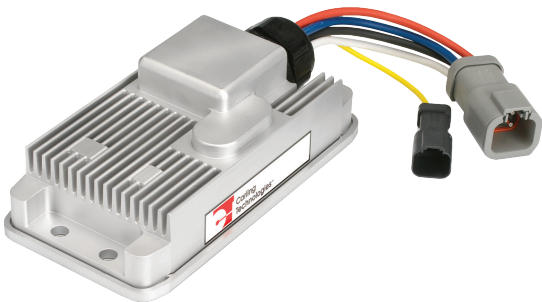
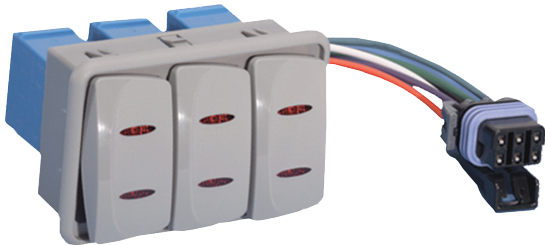
As a vertically integrated company with manufacturing facilities on three continents, Carling Technologies offers end-to-end product solutions, from concept and design to tooling, fabrication, and manufacturing. Carling’s independence and dedication to customers ensure the flexibility to respond quickly to any opportunity or requirement.

And Carling’s network of employees in ISO/TS-registered manufacturing plants and sales offices stretches worldwide, guaranteeing that Carling experts are always nearby to provide you with answers and support whenever and wherever you need them.

Some examples of custom solutions products are:



Light Control Module	Cruise Control	Horn Control
----------------------	----------------	--------------



Control Interface	HVAC Motor Control
-------------------	--------------------



European Headquarters

Carling Technologies LTD

4 Airport Business Park, Exeter Airport,
Clyst Honiton, Exeter, Devon, EX5 2UL, UK

Phone: Int + 44 1392.364422

Email: ltl.sales@carlingtech.com

Worldwide Headquarters

Carling Technologies Inc.

60 Johnson Avenue,
Plainville, CT 06062 USA

Phone: 860.793.9281

Email: sales@carlingtech.com

Asia-Pacific Headquarters

Carling Technologies, Asia-Pacific LTD.,

Suite 1607, 16/F Tower 2, The Gateway, Harbour City, 25
Canton Road, Tsimshatsui, Kowloon, Hong Kong

Phone: Int + 852-2737-2277

Email: sales@carlingtech.com.hk

WWW.CARLINGTECH.COM

