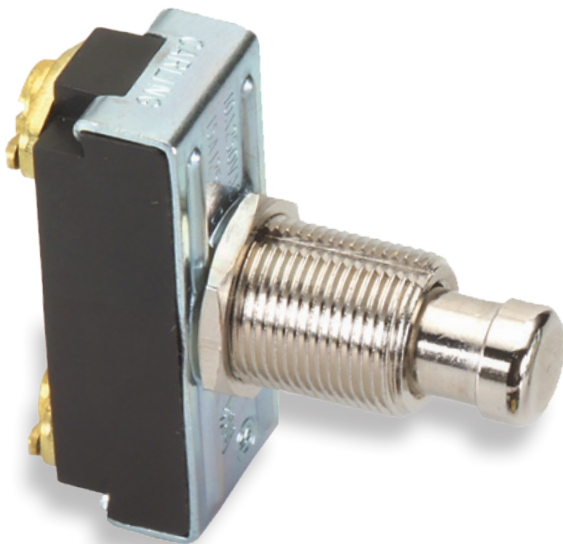
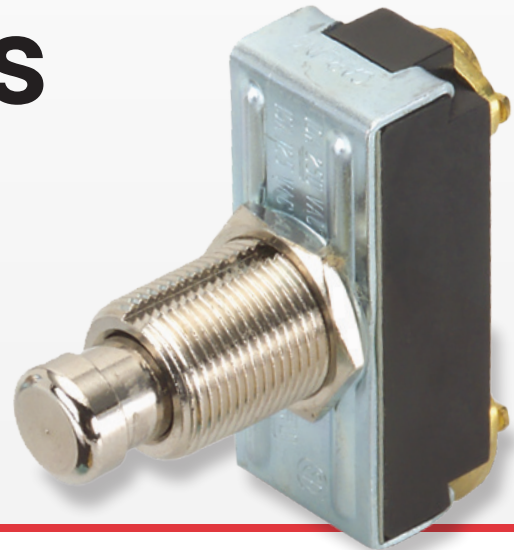


170-172-Series

Pushbutton Switches

PRODUCT WEBPAGE

request sample, configure part



The 170/172-Series pushbutton switches are single pole, high amperage switches suitable for shallow back panel applications. These switches are momentary action and require an actuation force of 2.5 lbs. The 170/172-Series switches are equipped with a slow-make, slow-break contact mechanism and are rated at 15 amps at 125VAC.

1	10-15	125, 250
Pole	Amps	VAC

Typical Applications

- Test & Measurement
- Meters
- Horns

Tech Specs

Dielectric Strength

UL/CSA: 1000V - live to dead metal parts

Electrical Life

25,000 cycles - Momentary

Operating Temperature

32°F to 185°F (0°C to 85°C)

Ordering Scheme

Sample Part Number **170 - CBL**

Selection 1 2

1. SERIES

10A 250VAC; 15A 125VAC

Single Pole

On-(Off)

Off-(On)

Solder Lug

170-B

172-B

Screw Terms.

170

172

Wire Leads

170-A

172-A

2. CAP STYLE / COLOR

2

CBL

Black

CRD

Red

CGN

Green

CWH

White

Notes:

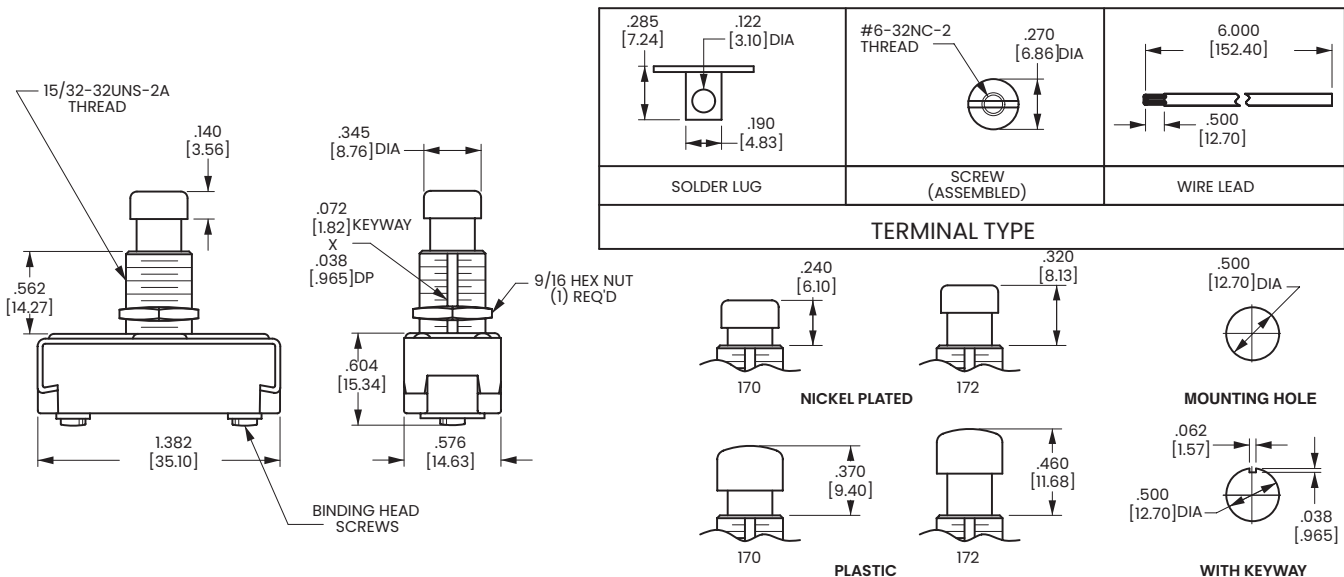
- Standard Wire lead Length is 6" for other wire lead length, Use Wire length lead Termination/Function code and Add "/ and the wire lead length required. Example: 172-A-CBL/10"
- When selection 2 is left blank, a standard nickel plated plunger is supplied.
- () Indicates momentary function.
- Hardware/Packaging options may be added to the base part number by adding A"/" with the option at the end of the part number. Example: 170-CBL/HDW ASSM Available options include:
 2 Hex No Hardware HDW ASSM HDW bulk Poly
 2 Hex nuts (1 assembled on switch, 1 Supplied in bulk) No Hardware included With Hardware assembled With Hardware bulk With Polybag

[Configure Complete Part Number >](#)

[Browse Standard Parts >](#)

Dimensional Specs

inches [millimeters]



Authorized Sales Representatives and Distributors

Click on a region of the map below to find your local representatives and distributors or visit www.carlingtech.com/findarep.



About Carling

Founded in 1920, Carling Technologies is a leading manufacturer of electrical and electronic switches and assemblies, circuit breakers, electronic controls, power distribution units, and multiplexed power distribution systems. With six ISO9001 and IATF16949 registered manufacturing facilities and technical sales offices worldwide, Carling Technologies Sales, Service and Engineering teams do much more than manufacture electrical components, they engineer powerful solutions! To learn more about Carling please visit www.carlingtech.com/company-profile.

To view all of Carling's environmental, quality, health & safety certifications please visit www.carlingtech.com/environmental-certifications.

© Carling Technologies, Inc.

3. Carling is a registered trademark of Carling Technologies, Inc. in the U.S. and other countries.